

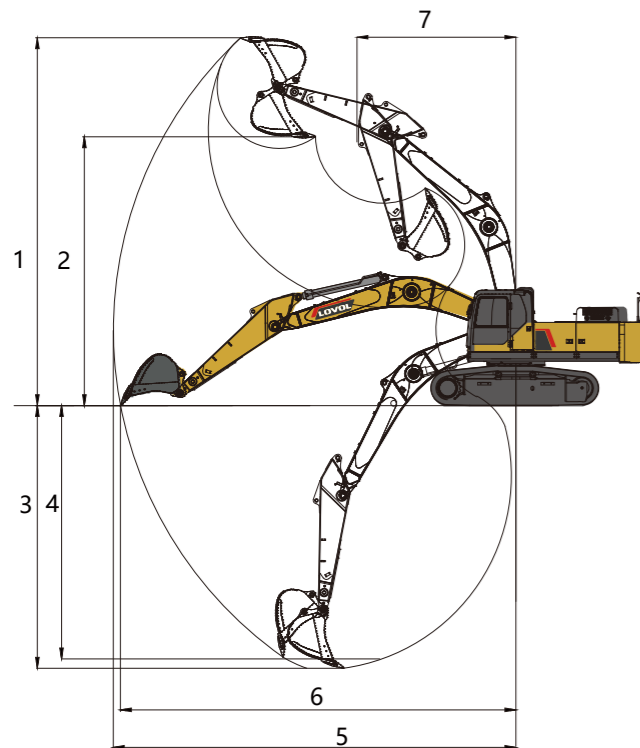
TECHNICAL SPECIFICATIONS

Engine

Engine Model	ISUZU AA-6HK1XQP
Number of Cylinders	6
Max. Torque/Speed	872.8N·m/1700rpm
Displacement	7.79L
Main Safety Valve Pressure	34.3MPa

Working Range

Max. Cutting Height	1	10004mm
Max. Loading Height	2	7019mm
Max. Digging Depth	3	6905mm
Max. Vertical Digging Depth	4	/
Max. Digging Radius	5	10727
Max. Reach at Ground Level	6	10523mm
Min. Turning Radius	7	3692mm



Main Performance

Bucket Digging Force	220kN
Arm Digging Force	181kN
Max. Traction Force	289kN
Max. Walking Speed	5.5km/h
Min. Walking Speed	3.2km/h
Rotary Speed	9.5r/min
Gradeability	35°
Ground Pressure	70kPa

Dimensions

Shipping Length	11500mm
Shipping Ground Length	5996
Shipping Height	3500mm
Transport Width	3205mm
Cab Height	3185
Counterweight Clearance of Bucket	1205
Min. Ground Clearance	520mm
Tail Turning Radius	3695mm
Length to Center of Rollers	4040mm
Track Length	4950mm
Track Gauge	2590mm
Track Shoe Width	601
Hood Height	2300
Rotary Platform Width	3190

Other Specifications

Boom Length	6470mm
Arm Length	2760mm
Track Section Number (each side)	48
Track Roller Number	9





RELIABILITY

Powerful Engine

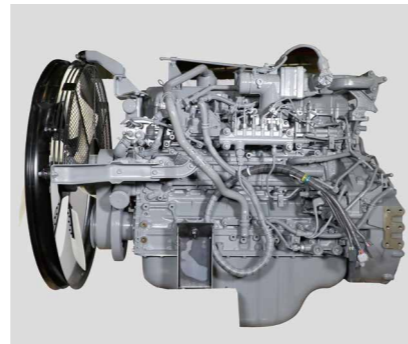
Original Isuzu engine imported from Japan which is specially designed for mining applications.

Electric Control Positive Flow System

During the design stage, LOVOL has utilized latest technologies to develop an integrated hydraulic system. The positive flow control system adjusts the displacement of pump and the motion of valve spool simultaneously, delivering optimal operating experience for the operator with smooth and responsive control.

Core Components

Relying on Japan Engineering Center, LOVOL has establishing solid partnership with world-renowned enterprises and improve the quality and service life of these components. The supply of the core components like engine, pump, valve, motor, cylinder and forth also can be priority guaranteed.



PRODUCTIVITY

Superb Match

Each component in powertrain system, such as engine, gear, rotary motor, working pumps and hydraulic cylinder are specially customized to achieve perfect match with one another, the whole system features are more reliable.

Outperformance

To carry out the mining applications, the machine equips with powerful engine combining with large flow hydraulic system, together with electric-positive flow hydraulic control system to make machine more suitable for tough projects.

Great Digging Force

On the premise of ensuring static digging force, LOVOL dedicate to research of dynamic digging force. The system will automatically detect the pressure when face big frustration during digging, and automatically adjusts output pressure to keep the powerful force in digging process.

ROBUSTNESS



Rigorous Test and Experiment

Machine test: LOVOL CL-6 machine testing yard covers more than 200,000 square meters, it can simulate various applications like earthmoving, aggregate, sand, quarry and forth. The test including strengthen vibration, noise, working efficiency, oil consumption, travel and climbing tests, etc. Every new model should go through more than 2,000 working hours strengthen combination test here.

Robust Chassis (Extensional)

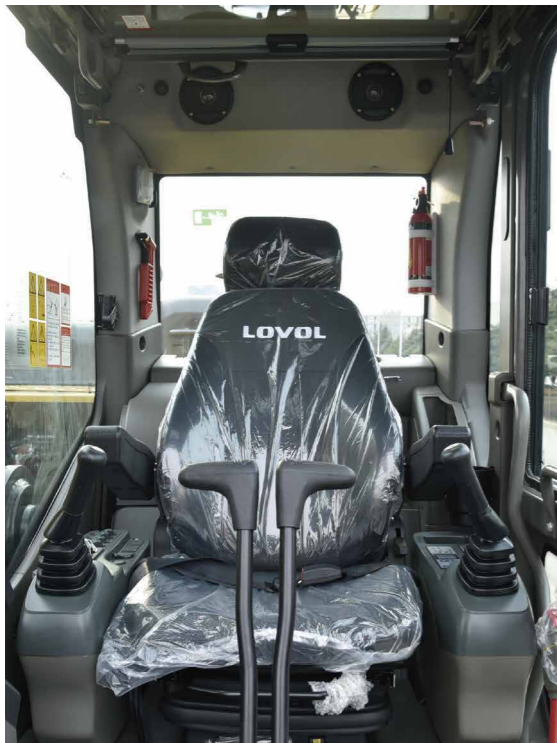
Improved heat treatment of Track Roller, Carrier Roller, Idler, Drive Roller and Track's surface, which makes each part more resistant to prolong the service life. The Track roller and Idler utilize anti-freeze grease and seals which can protect parts when working in the temperature of -40 C. Lifetime self-lubrication chain and reinforced track beam make the chassis more robust.

Reinforced Working Device

Adopts high-strength rock bucket teeth which is special suitable for the tough applications, the boom and arm are reinforced to prolong the service life. Self-lubrication shaft sleeve is used to make every linkage works smoothly with high durability.



COMFORT



Large Space Cab

Equipped with large cab which provides operator big space to operate machine. The premium suspension seat with armrests is very comfortable and it can reduce the working fatigue dramatically. Front windshield can be partially or fully retracted to the cab roof. Rearview camera is optional to get better rear vision in order to improve operation safety in jobsite.

Ergonomic Design

The proportional joystick delivers sensitivity, accuracy and smoothness in operation. This joystick is specially designed to meet different operating conditions. Intelligent control system is standard which could control diverse attachments such as bucket, hammer, scarifier and hydraulic scissors.

Low Noise and Low Vibration

In order to reduce work fatigue and improve productivity, the noise inside of cab has been controlled to the lowest level. The cab is attached to the frame with buffer that dampens vibrations and sound levels to enhance operator comfort.

INCREASE YOUR PRODUCTIVITY AND PROFIT WITH LOVOL ATTACHMENTS

You can easily expand the performance of your machine by utilizing any of the variety of LOVOL Attachments. Each LOVOL Attachments is designed to fit the weight and horsepower of LOVOL Excavator for improved performance, safety, and stability.



Quick Coupler



Hydraulic Shear



Hydraulic Hammer



Standard Bucket

